



SERT PLASTİK[®]
PVC Sistemleri / PVC Systems



Değerli İş Ortaklarımız,

1984 Yılında faaliyete başlayan firmamız her geçen yıl daha da güçlenerek bugün 5000 m² kapalı alanda devam eden, üretim gücüne güç katarak hızlı ve güçlü şekilde büyümeye devam etmektedir.

Globalleşen dünyada her kuruluş belli standart ta ürün ve hizmeti müşterilerine sağlamakta, ancak bir adım öne çıkmanın yolu daha kaliteli ürün ve hizmet vermektir.

Firmamız ürettiği ürünlerin kalitesini henüz üretim aşamasındayken giriş-proses-son kontrol ve yüksek teknoloji test cihazları ile donatılmış laboratuvar testleri ile garanti altına alınmaktadır.

Çağdaş yönetim anlayışı ve kadrosu ile pazarda ilk sıralarda yer alan firmamız deneyim ve bilgi birikimlerini üretime taşıyarak, toplam kalite yönetimine olan inancı ile koşulsuz müşteri memnuniyetini ve müşteri bağlılığını yıllardır ödün vermeden sürdürmektedir.

40'ı aşkın ülkeye ihracat yaparak ülkemize döviz kazandırmanın gururunu yaşamaktadır.

Our dear business partners,

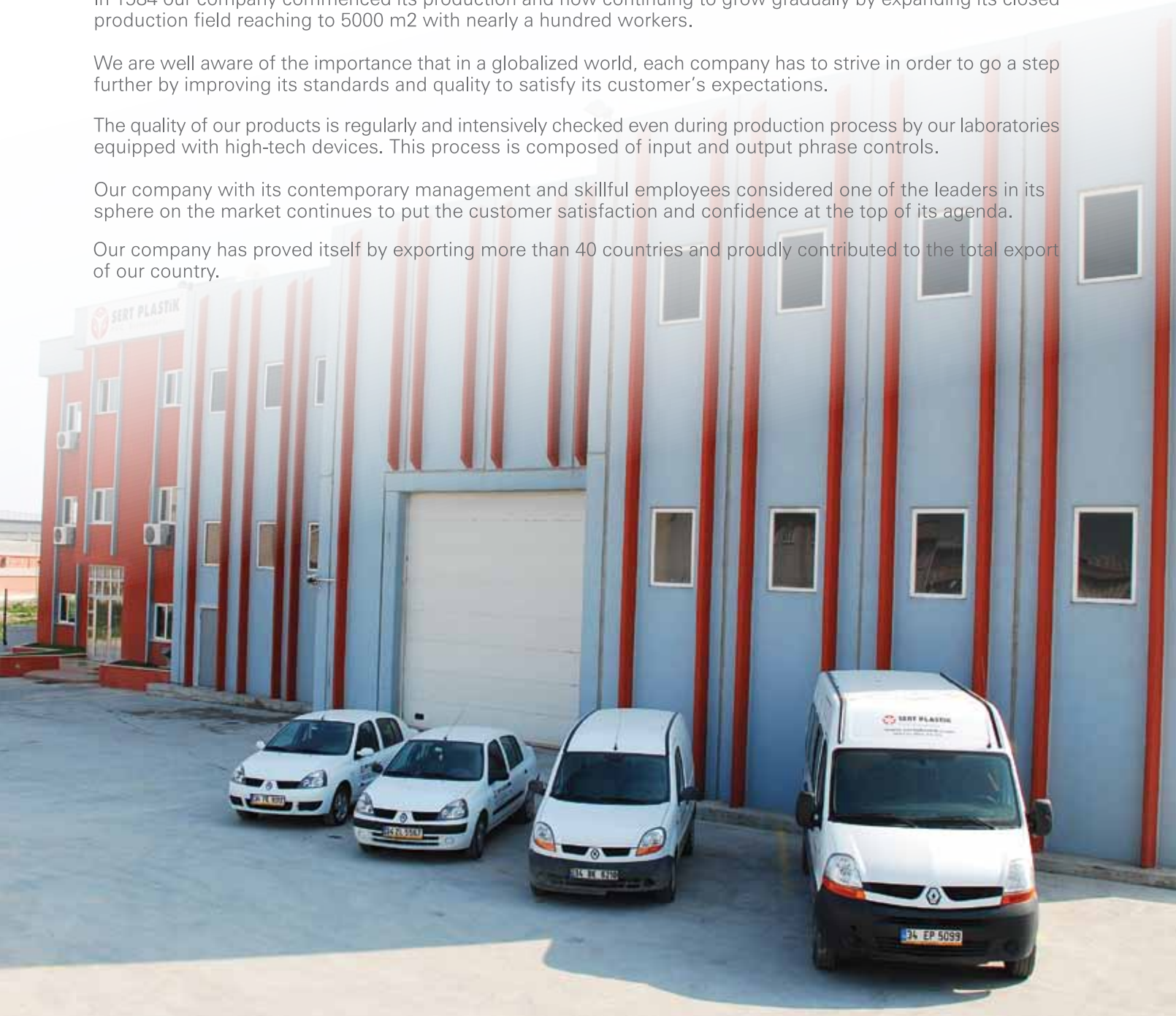
In 1984 our company commenced its production and now continuing to grow gradually by expanding its closed production field reaching to 5000 m² with nearly a hundred workers.

We are well aware of the importance that in a globalized world, each company has to strive in order to go a step further by improving its standards and quality to satisfy its customer's expectations.

The quality of our products is regularly and intensively checked even during production process by our laboratories equipped with high-tech devices. This process is composed of input and output phrase controls.

Our company with its contemporary management and skillful employees considered one of the leaders in its sphere on the market continues to put the customer satisfaction and confidence at the top of its agenda.

Our company has proved itself by exporting more than 40 countries and proudly contributed to the total export of our country.

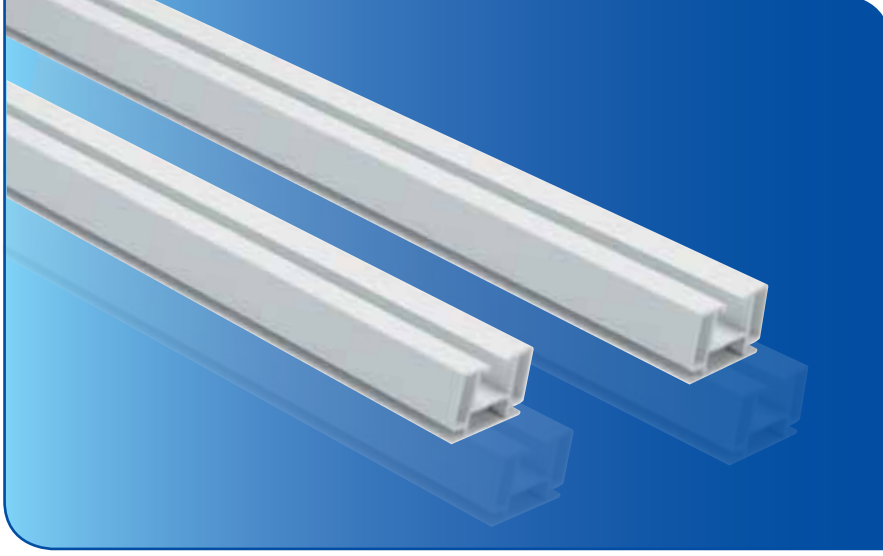




SERT PLASTİK[®]
PVC Sistemleri / PVC Systems



**Perde Rayları
ve Aksesuarları**

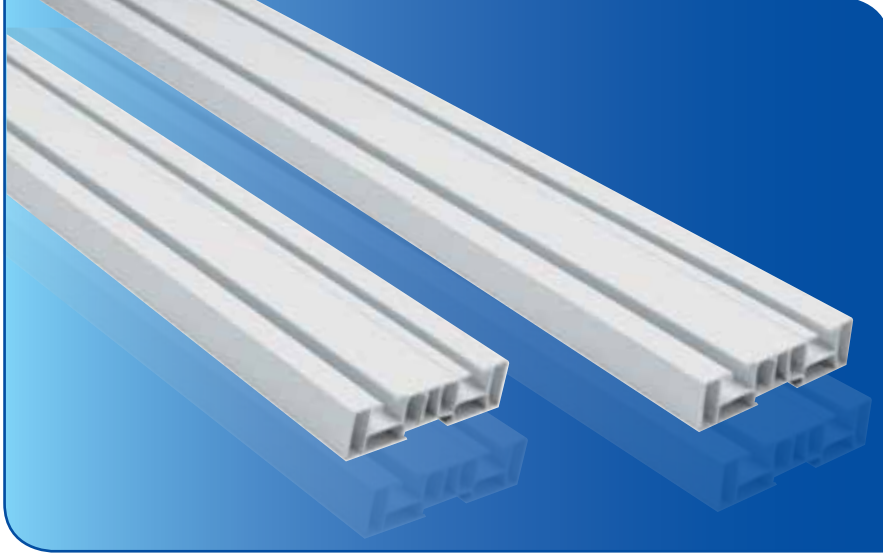


Süper Tekli Perde Rayı

Super Single Curtain Rail

Ambalaj/Package:
Naylon/Nylon 120 m.

SP-01

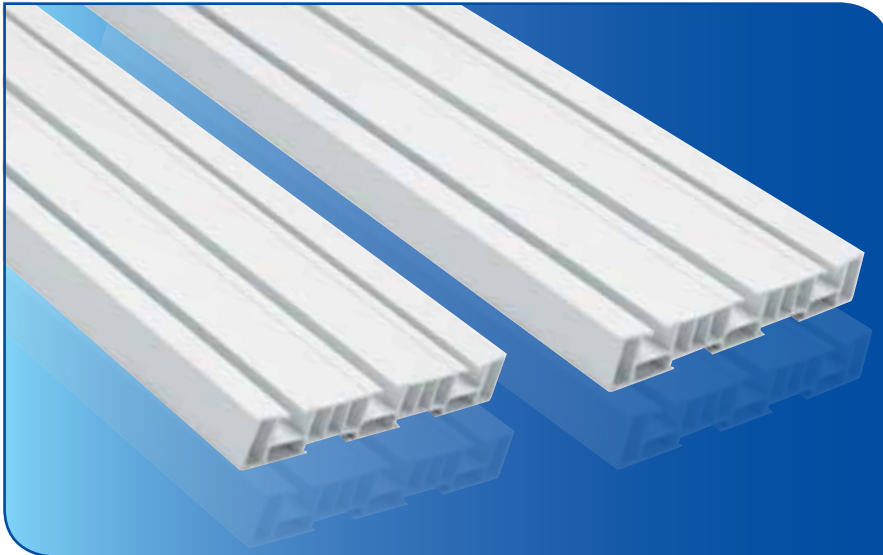


Süper İkili Perde Rayı

Super Double Curtain Rail

Ambalaj/Package:
Naylon/Nylon 120 m.

SP-02

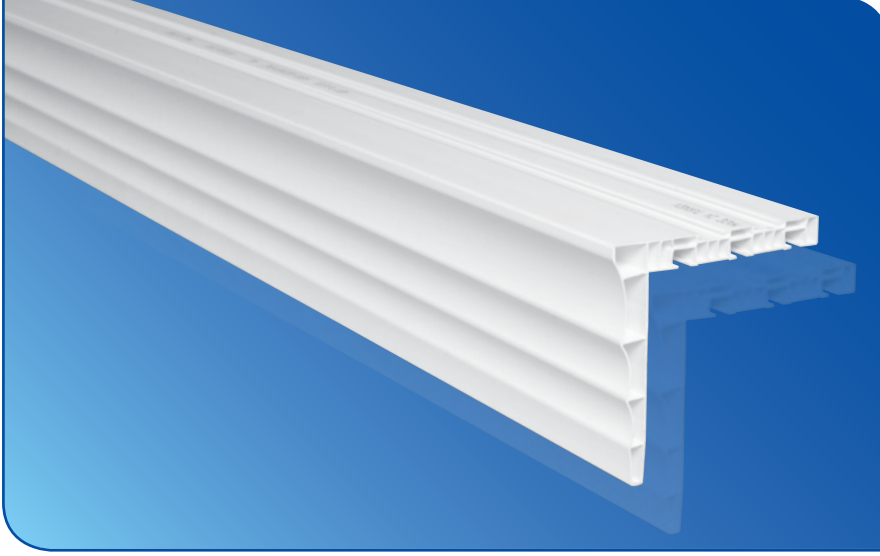


Süper Üçlü Perde Rayı

Super Triple Curtain Rail

Ambalaj/Package:
Naylon/Nylon 60 m.

SP-03



Kartonpiyer Perde Rayı 3'lü

Papier Mach Triple Curtain Rail

Ambalaj/Package:
Naylon/Nylon 24 m.

SP-04



Kartonpiyer Perde Rayı 3'lü (Ahşap)

Papier Mach Triple Curtain Rail (Wood Coated)

Ambalaj/Package:
Naylon/Nylon 24 m.

SP-4-S02



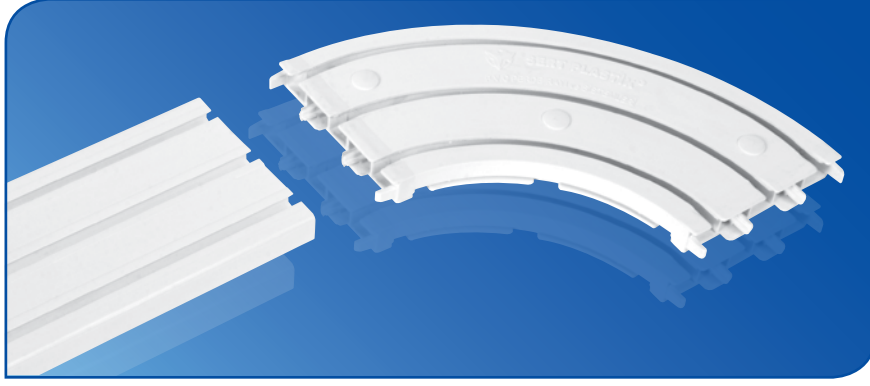


2'li dönüş

Double Turning

Ambalaj/Package:
Kutu/Box 25

60PA-2D

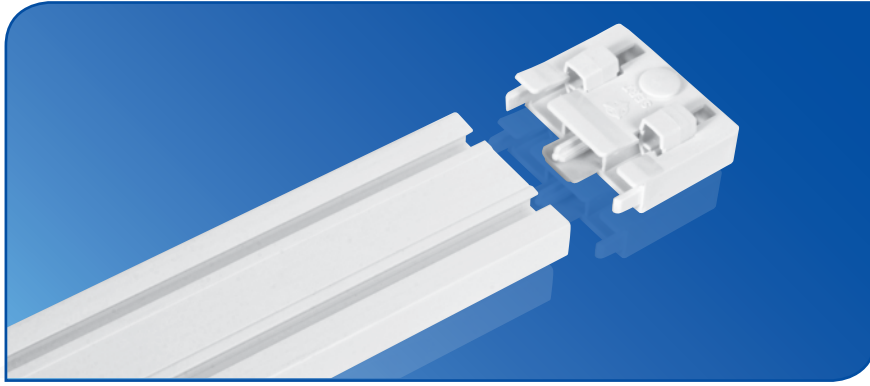


3'lü dönüş

Triple Turning

Ambalaj/Package:
Kutu/Box 25

60PA-3D

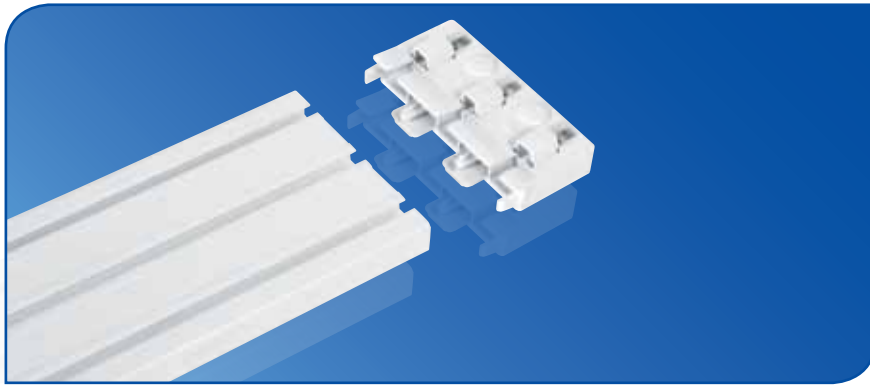


2'li Final

Double Final

Ambalaj/Package:
Kutu/Box 60

60PA-2F

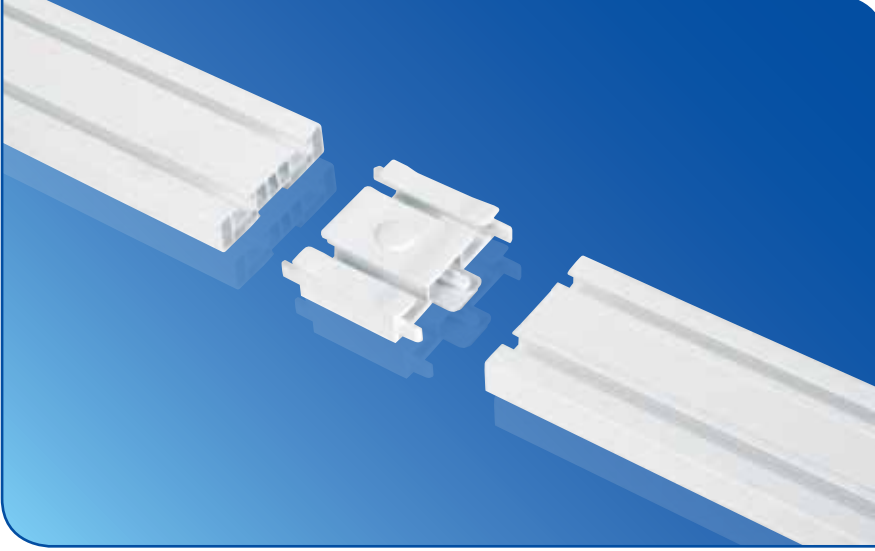


3'lü Final

Triple Final

Ambalaj/Package:
Kutu/Box 60

60PA-3F

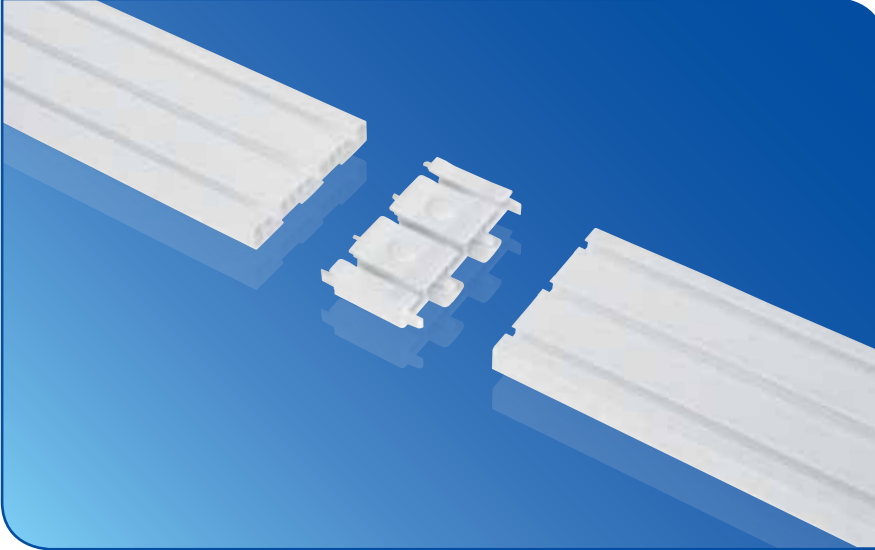


**2'li Ek
(Birleştirme)**

Double Joint

**Ambalaj/Package:
Kutu/Box 60**

60PA-2B



**3'lü Ek
(Birleştirme)**

Triple Joint

**Ambalaj/Package:
Kutu/Box 60**

60PA-3B

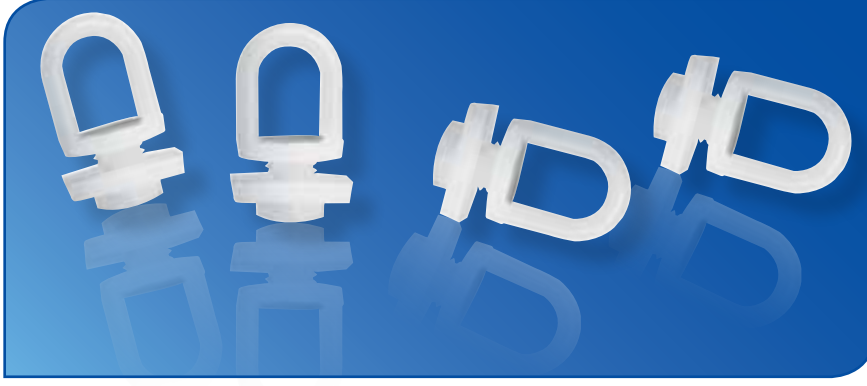


Kelebek Final Stop

Butterfly Final Stop

**Ambalaj/Package:
Naylon/Nylon 1000**

60PA-KFS



**Final Stop
(Sonlandırıcı)**

Final Stop

Ambalaj/Package:
Naylon/Nylon 1000

60PA-FS

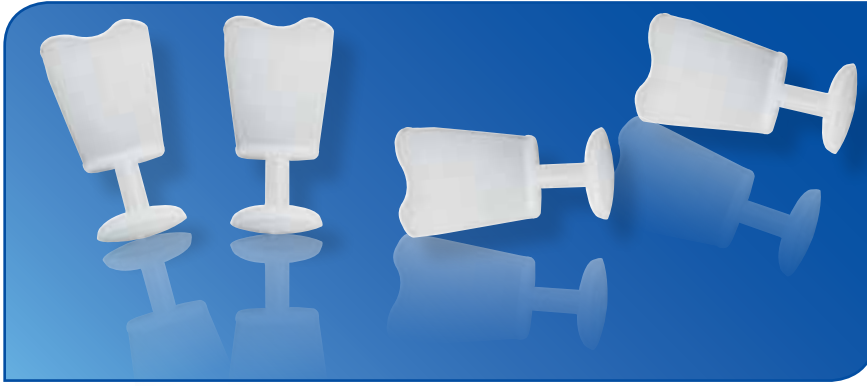


Perde Ruleti Kilitli

Locked Roulette

Ambalaj/Package:
Naylon/Nylon 1000

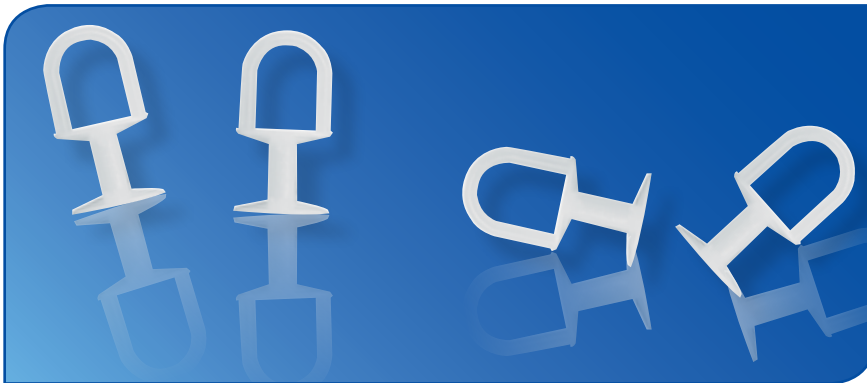
60PA-KR



**Perde Ruleti
Makine Dikmeli
Machine Stitched
Track**

Ambalaj/Package:
Naylon/Nylon 1000

60PA-MDR

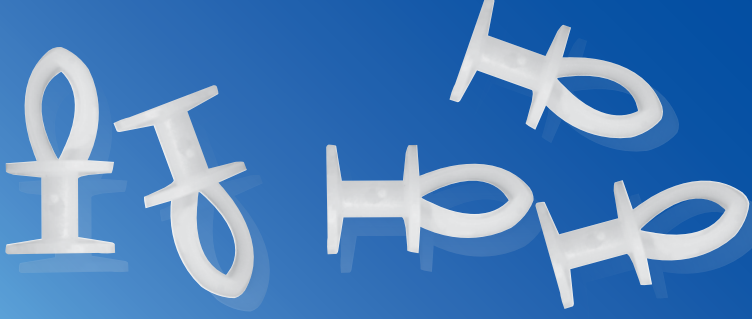


Perde Ruleti Dikmeli

Stitched Track

Ambalaj/Package:
Naylon/Nylon 1000

60PA-DR

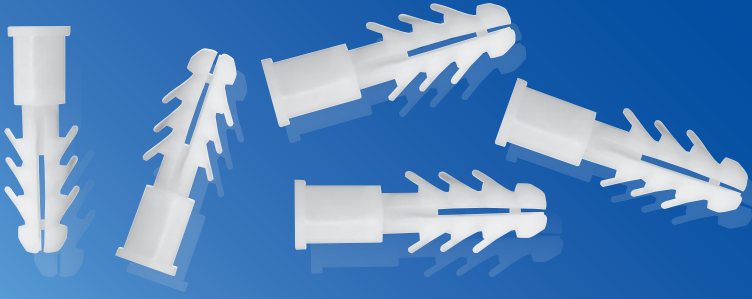


Perde Ruleti Geçmeli

Clips Track

Ambalaj/Package:
Naylon/Nylon 1000

60PA-GR

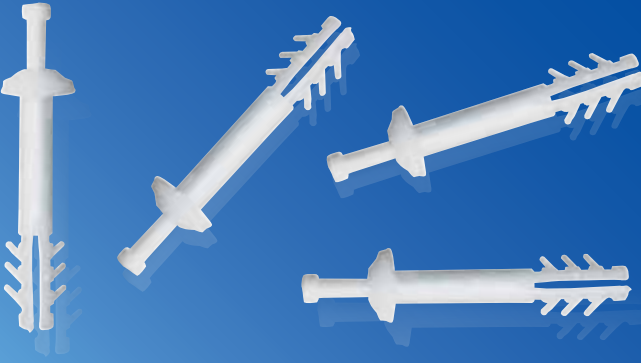


6-8-10 mm Dübel

Wall Plug

Ambalaj/Package:
Naylon/Nylon 1000

60PA-8D

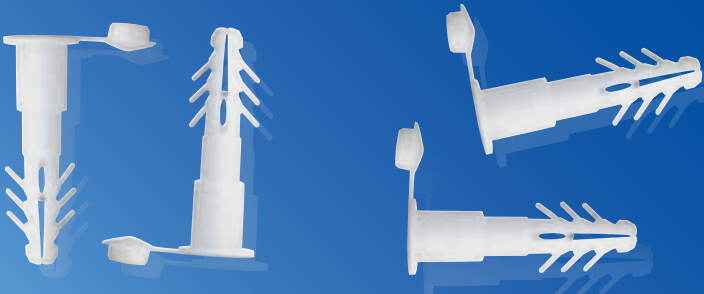


Çivili Dübel

Wall Plug With Nail

Ambalaj/Package:
Naylon/Nylon 500

60PA-CD



Kapaklı Dübel

Wall Plug With Lid

Ambalaj/Package:
Naylon/Nylon 500

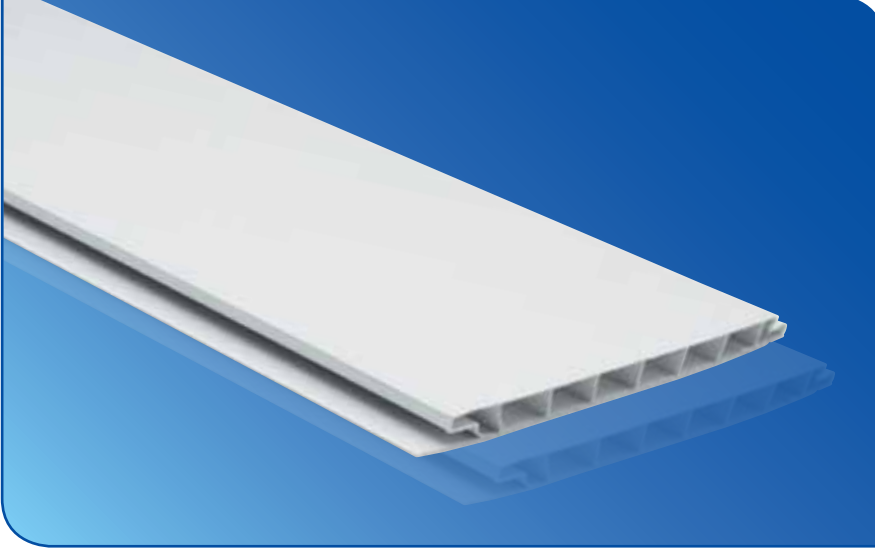
60PA-KD



SERT PLASTİK[®]
PVC Sistemleri / PVC Systems



**Lambriler
ve Aksesuarları**

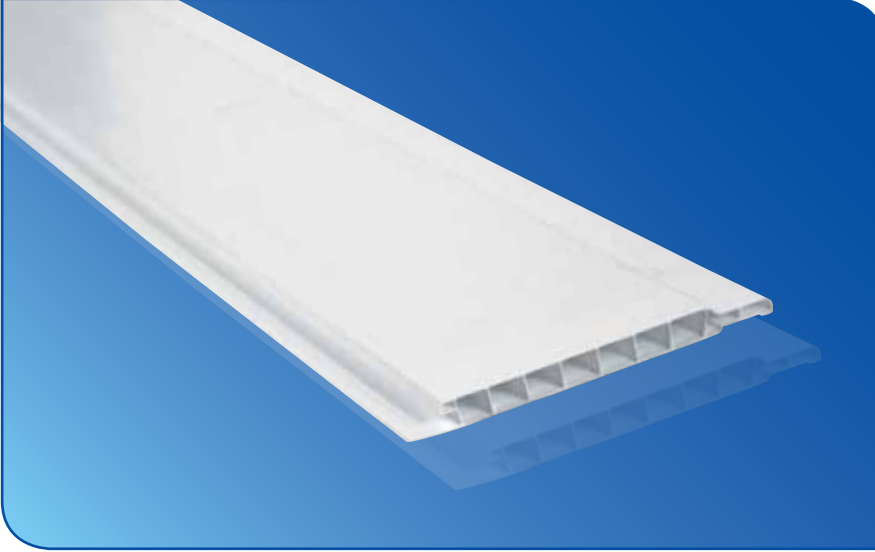


**10 cm Lambri
Düz**

**Panelling
(No Line)**

**Ambalaj/Package:
Naylon/Nylon: 60 m.**

SP-10D



**10 cm Lambri
Fugalı**

**Panelling
(With Middle Line)**

**Ambalaj/Package:
Naylon/Nylon: 60 m.**

SP-10F

Lambri Aksesuarları



**SP-40 Çavuş
Exterior
Accessories**

**Ambalaj/Package:
Naylon/Nylon: 99 m.**



**SP-41 Süslü
Internal
Accessories**

**Ambalaj/Package:
Naylon/Nylon: 99 m.**



**SP-47 H Profil
H Profile
Accessories**

**Ambalaj/Package:
Naylon/Nylon: 99 m.**



**SP-49 F Profil
F Profile
Accessories**

**Ambalaj/Package:
Naylon/Nylon: 99 m.**



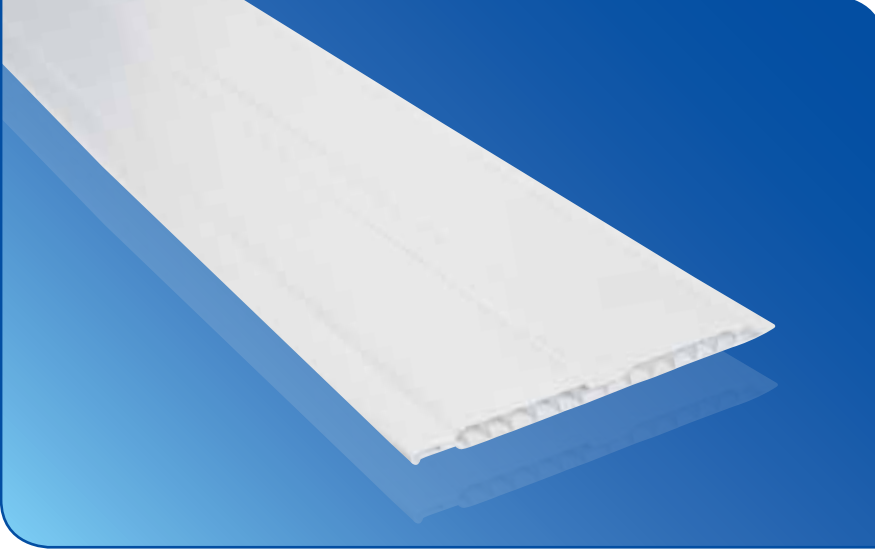
**SP-50 U Profil
U Profile
Accessories**

**Ambalaj/Package:
Naylon/Nylon: 99 m.**



**SP-56 L Profil
L Profile
Accessories**

**Ambalaj/Package:
Naylon/Nylon: 99 m.**

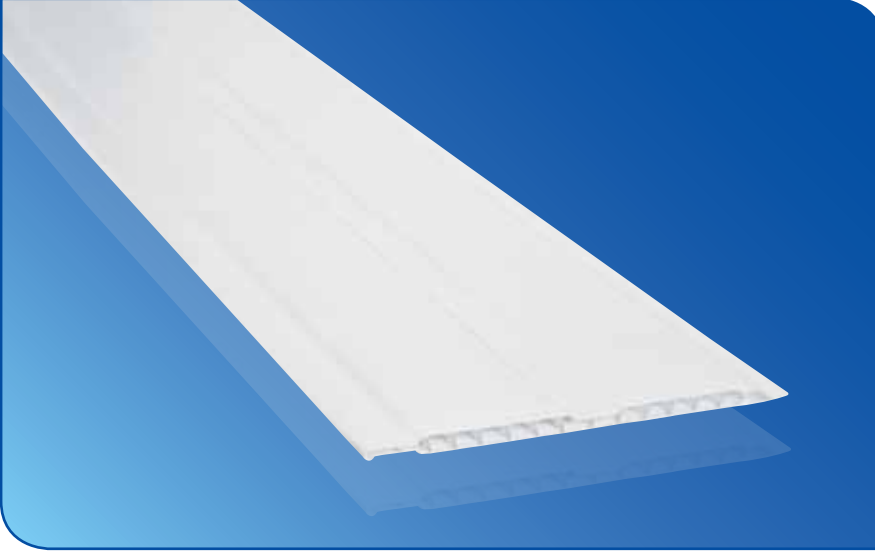


**12.5 cm Lambri
Fugalı**

**Panelling
(With Middle Line)**

**Ambalaj/Package:
Naylon/Nylon: 60 m.**

SP-12F



**12.5 cm Lambri
Fugalı
(6 mm-Ekonomik)**

**Panelling (With
Middle Line)
6 mm-Eco**

**Ambalaj/Package:
Naylon/Nylon: 60 m.**

SP-12FE

Lambri Aksesuarları



**SP-40 Çavuş
Exterior
Accessories**

**Ambalaj/Package:
Naylon/Nylon: 99 m.**



**SP-41 Süslü
Internal
Accessories**

**Ambalaj/Package:
Naylon/Nylon: 99 m.**



**SP-47 H Profil
H Profile
Accessories**

**Ambalaj/Package:
Naylon/Nylon: 99 m.**



**SP-49 F Profil
F Profile
Accessories**

**Ambalaj/Package:
Naylon/Nylon: 99 m.**



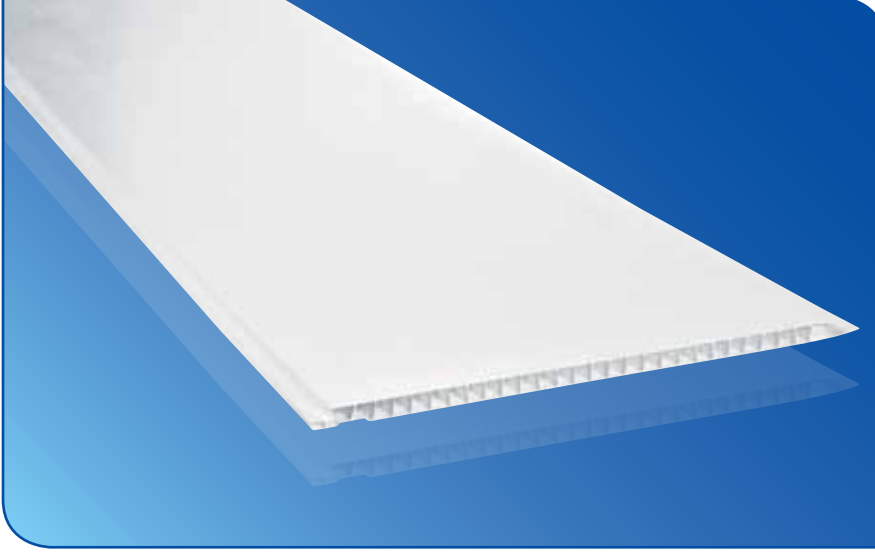
**SP-50 U Profil
U Profile
Accessories**

**Ambalaj/Package:
Naylon/Nylon: 99 m.**



**SP-56 L Profil
L Profile
Accessories**

**Ambalaj/Package:
Naylon/Nylon: 99 m.**



**20 cm Lambri
Düz**

Panelling (No line)

**Ambalaj/Package:
Naylon/Nylon: 60 m.**

SP-20D



**20 cm
Lambri Fugalı**

**Panelling
(With Middle Line)**

**Ambalaj/Package:
Naylon/Nylon: 60 m.**

SP-20F

Lambri Aksesuarları



**SP-40 Çavuş
Exterior
Accessories**

**Ambalaj/Package:
Naylon/Nylon: 99 m.**



**SP-41 Süslü
Internal
Accessories**

**Ambalaj/Package:
Naylon/Nylon: 99 m.**



**SP-47 H Profil
H Profile
Accessories**

**Ambalaj/Package:
Naylon/Nylon: 99 m.**



**SP-49 F Profil
F Profile
Accessories**

**Ambalaj/Package:
Naylon/Nylon: 99 m.**



**SP-50 U Profil
U Profile
Accessories**

**Ambalaj/Package:
Naylon/Nylon: 99 m.**



**SP-56 L Profil
L Profile
Accessories**

**Ambalaj/Package:
Naylon/Nylon: 99 m.**



25 cm Lambri

Panelling (No line)

Ambalaj/Package:
Naylon/Nylon: 30 m.

SP-25

Lambri Aksesuarları



SP-40 Çavuş Exterior Accessories

Ambalaj/Package:
Naylon/Nylon: 99 m.



SP-41 Süslü Internal Accessories

Ambalaj/Package:
Naylon/Nylon: 99 m.



SP-47 H Profil H Profile Accessories

Ambalaj/Package:
Naylon/Nylon: 99 m.



SP-49 F Profil F Profile Accessories

Ambalaj/Package:
Naylon/Nylon: 99 m.



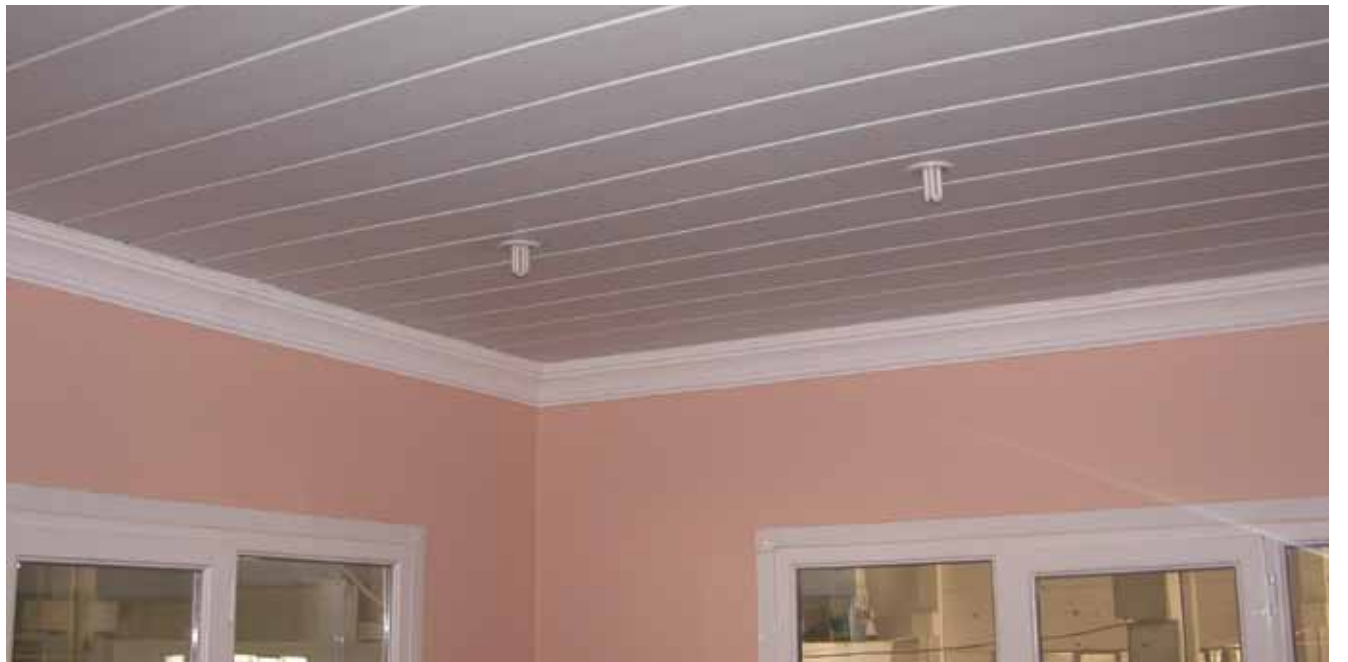
SP-50 U Profil U Profile Accessories

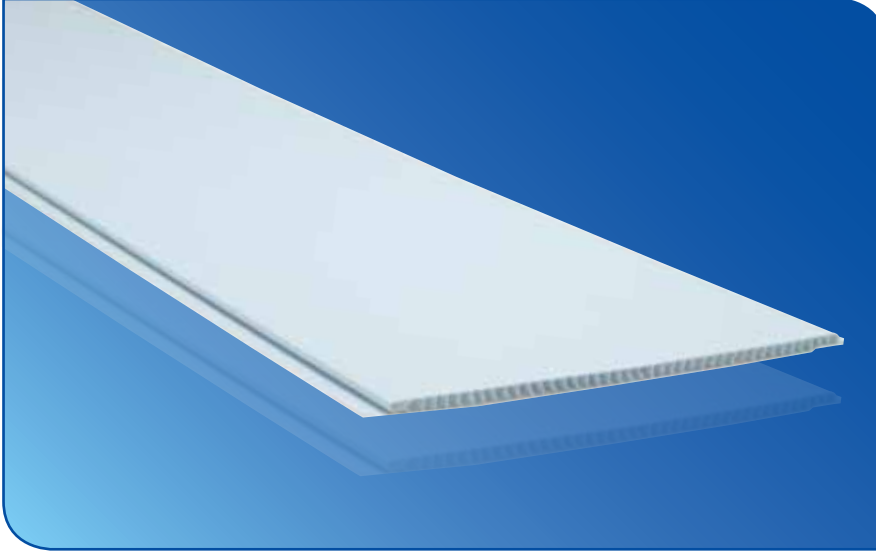
Ambalaj/Package:
Naylon/Nylon: 99 m.



SP-56 L Profil L Profile Accessories

Ambalaj/Package:
Naylon/Nylon: 99 m.





17 cm Lambri Düz

**Panelling
(No Line)**

**Ambalaj/Package:
Naylon/Nylon: 60 m.**

SP-17



SP-40 Çavuş Exterior Accessories

**Ambalaj/Package:
Naylon/Nylon: 99 m.**



SP-17A Süslü Internal Accessories

**Ambalaj/Package:
Naylon/Nylon: 99 m.**



SP-17C H Profil H Profile Accessories

**Ambalaj/Package:
Naylon/Nylon: 99 m.**



SP-17B F Profil F Profile Accessories

**Ambalaj/Package:
Naylon/Nylon: 99 m.**



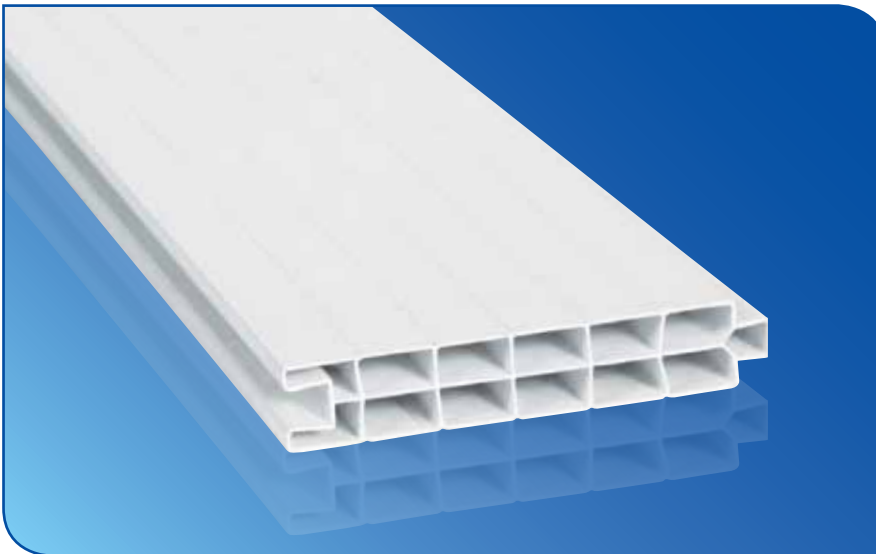
SP-17D U Profil U Profile Accessories

**Ambalaj/Package:
Naylon/Nylon: 99 m.**



SP-56 L Profil L Profile Accessories

**Ambalaj/Package:
Naylon/Nylon: 99 m.**

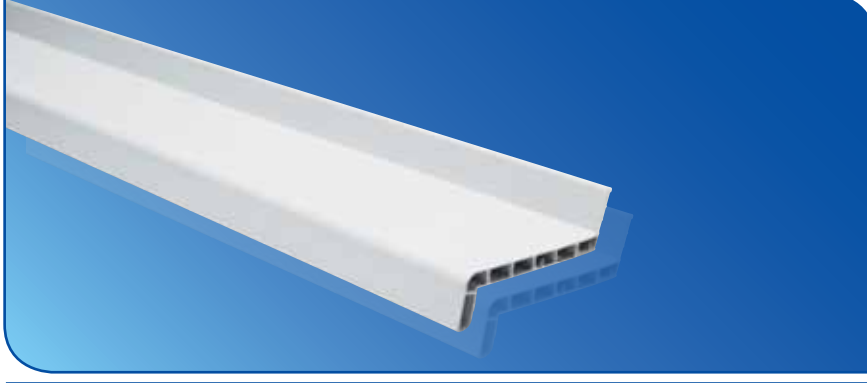


10 cm Kapı Lambri/ Door Panelling

**(Çift Bölmeli/
With to Block)**

**Ambalaj/Package:
Naylon/Nylon: 30 m.**

SP-10B

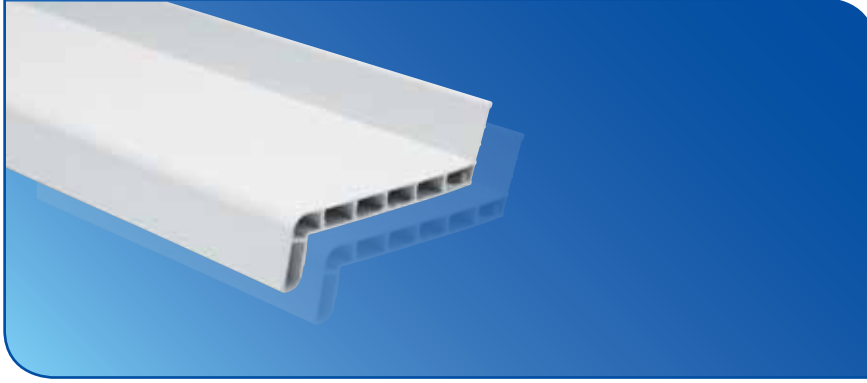


80'lik Denizlik

80'th Sill Wall Panel

Ambalaj/Package:
Naylon/Nylon: 60 m.

SP-D80

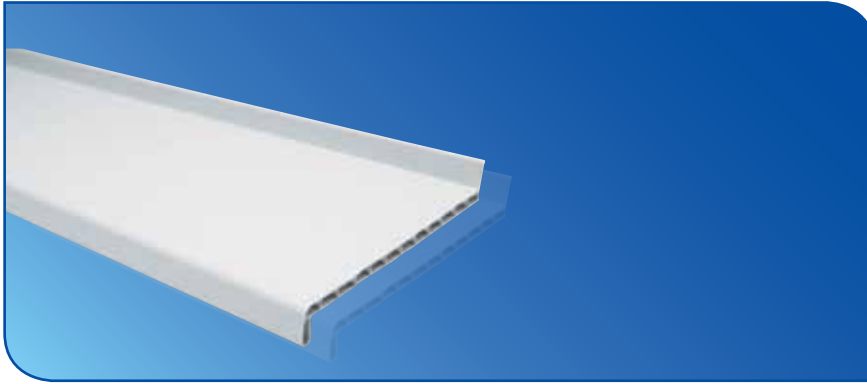


120'lik Denizlik

120'th Sill Wall Panel

Ambalaj/Package:
Naylon/Nylon: 60 m.

SP-D120

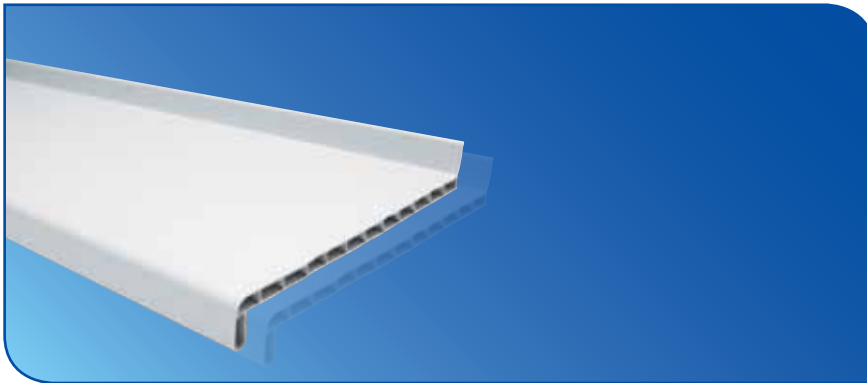


150'lik Denizlik

150'th Sill Wall Panel

Ambalaj/Package:
Naylon/Nylon: 60 m.

SP-D150



180'lik Denizlik

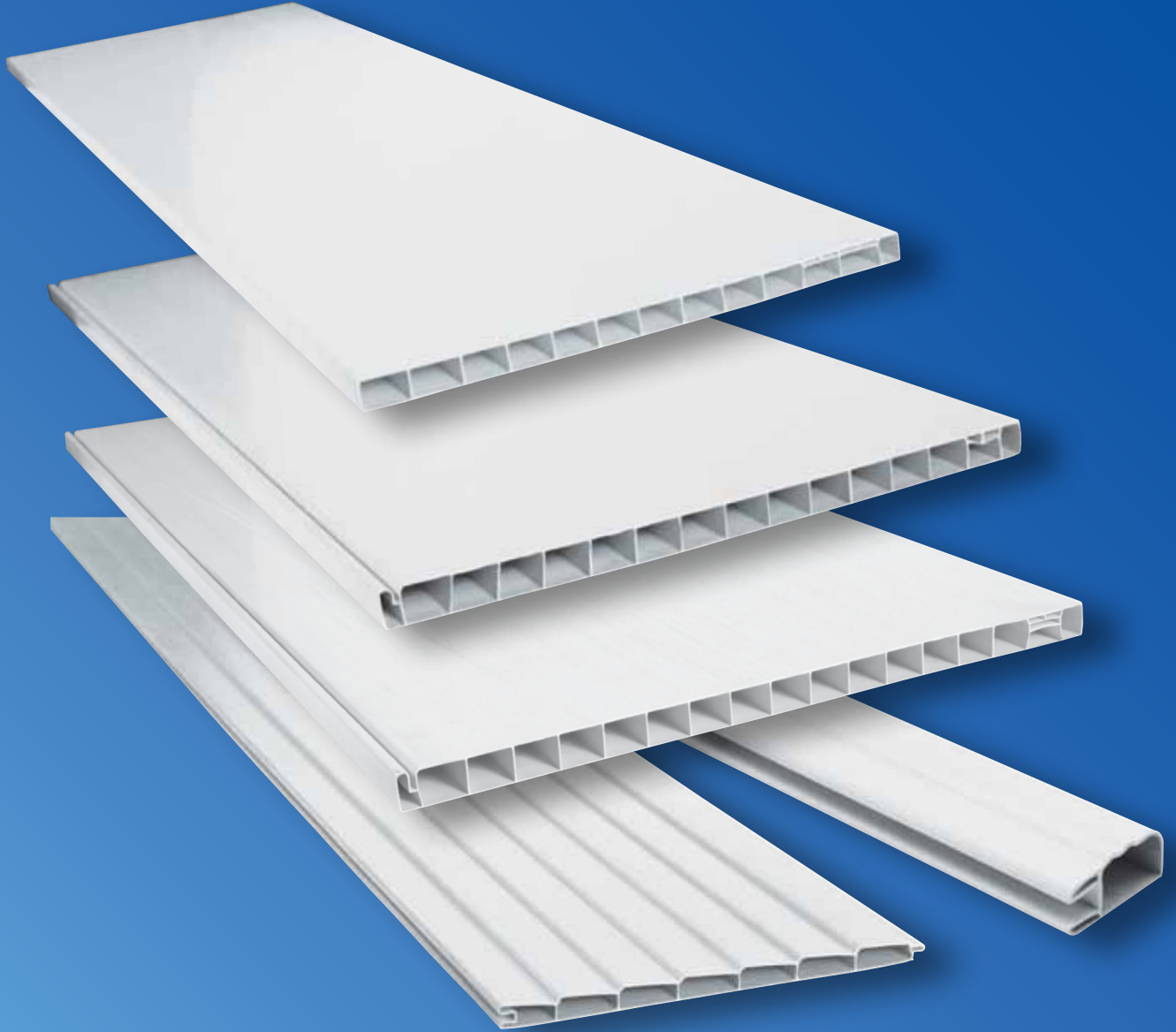
180'th Sill Wall Panel

Ambalaj/Package:
Naylon/Nylon: 60 m.

SP-D180



SERT PLASTİK[®]
PVC Sistemleri / PVC Systems



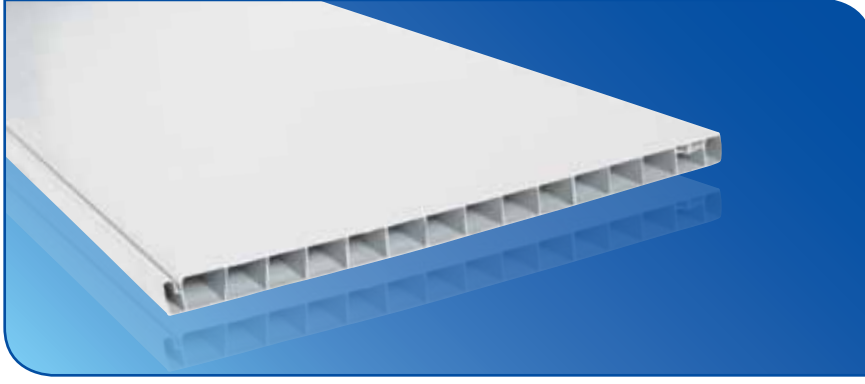
**Dolap Profilleri ve
Aksesuarları**



**30 cm'lik
Dolap Profili**

**Wardrobe Profile
(White/Wooden)**

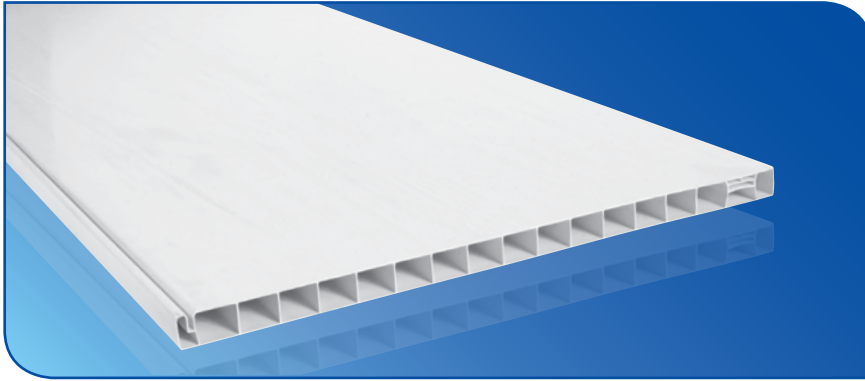
SP-30



**35 cm'lik
Dolap Profili**

**Wardrobe Profile
(White/Wooden)**

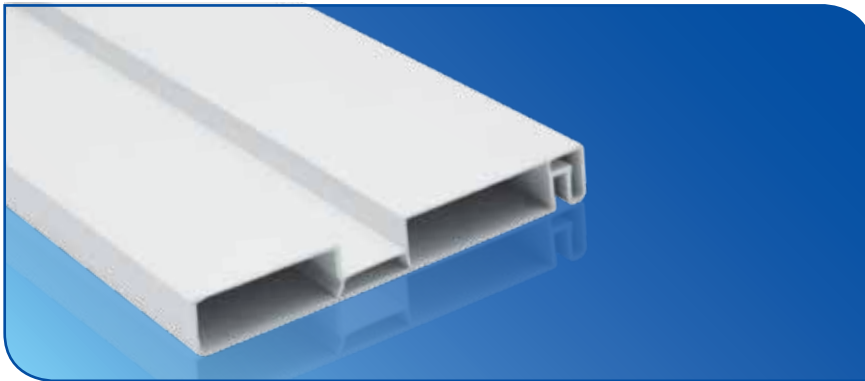
SP-35-35S02



**40 cm'lik
Dolap Profili**

**Wardrobe Profile
(White/Wooden)**

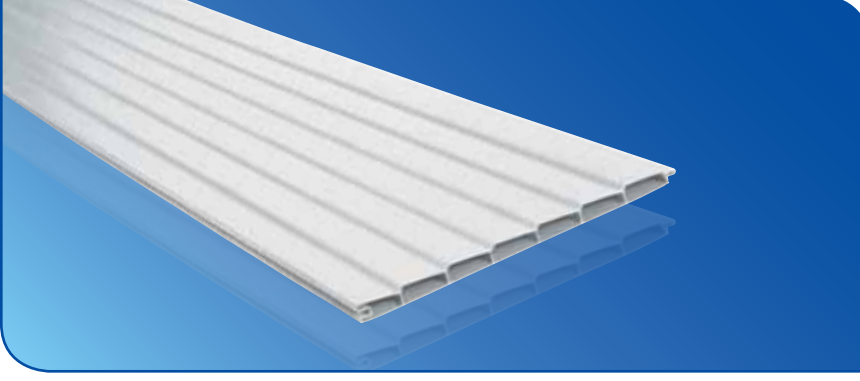
SP-40



Çekmece Profili

**Wardrobe Drawer
Profile
(White/Wooden)**

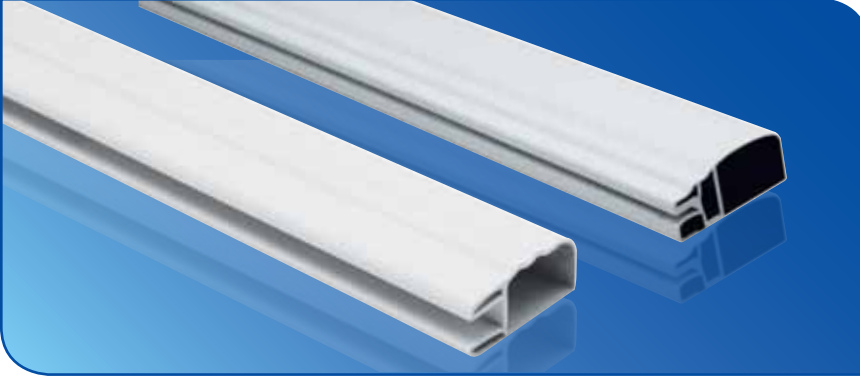
SP-37



Panjur Profili

**Wardrobe Blinds Profile
(White/Wooden)**

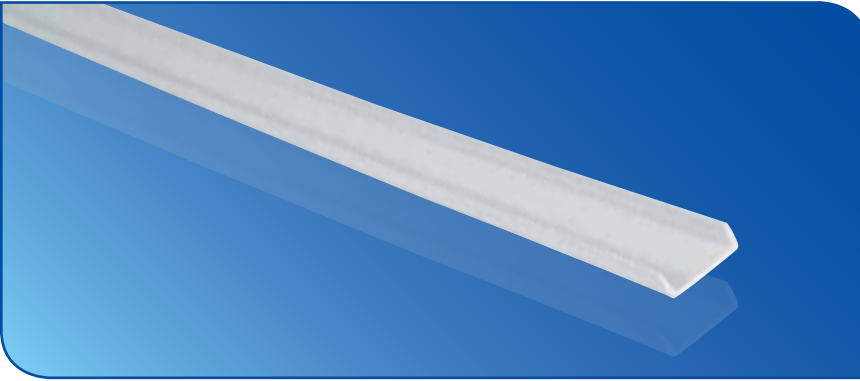
SP-36



**2.5 mm ve 8.5 mm
Çerçeve Profili**

**Wardrobe Edge Profile
(White/Wooden)**

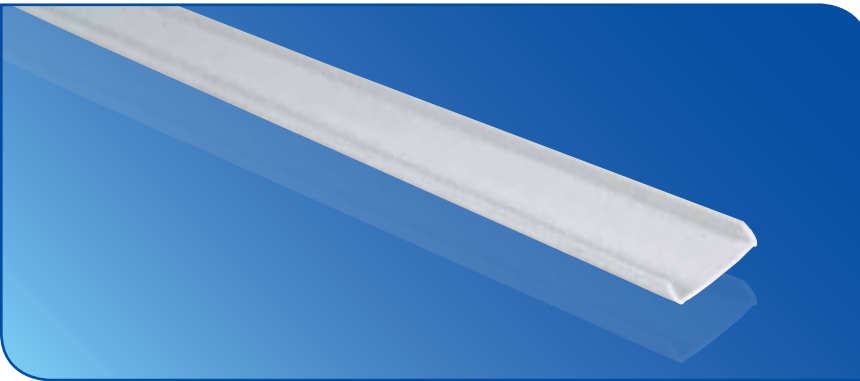
SP-38-38A



**30 cm'lik Kenar
Kapama Profili**

**Hard Edge Profile
(White/Wooden)**

SP-30A



**35 cm'lik Kenar
Kapama Profili**

**Hard Edge Profile
(White/Wooden)**

SP-35A



SERT PLASTİK[®]
PVC Sistemleri / PVC Systems



SERT PLASTİK PROFİL SAN.TİC.LTD.ŞTİ

Adnan Kahveci Mah.Çalışlar Cad.No:24 Gürpınar-Büyükçekmece-İSTANBUL/TURKEY

Telefon: + 90 (0 212) 855 83 55 (Pbx) Faks: + 90 (0 212) 855 83 57

email: sert@sertplastik.com

www.sertplastik.com - www.sertplastik.com.tr